

How Are Companies Using Kubernetes and Spinnaker?

As companies navigate increasing complexities in software development in pursuit of safe and speedy deployment, many are embracing continuous integration/continuous delivery (CI/CD) models. A few years ago, Kubernetes took center stage for teams using CI/CD, and today the conversation extends to Spinnaker.

Spinnaker is believed to be a great complement to Kubernetes as the combination of the two increases deployment efficiency. **Pulse surveyed 100 technical decision-makers to understand the prevalence of Kubernetes and Spinnaker across companies as well as the state of affairs among Kubernetes and Spinnaker users.**

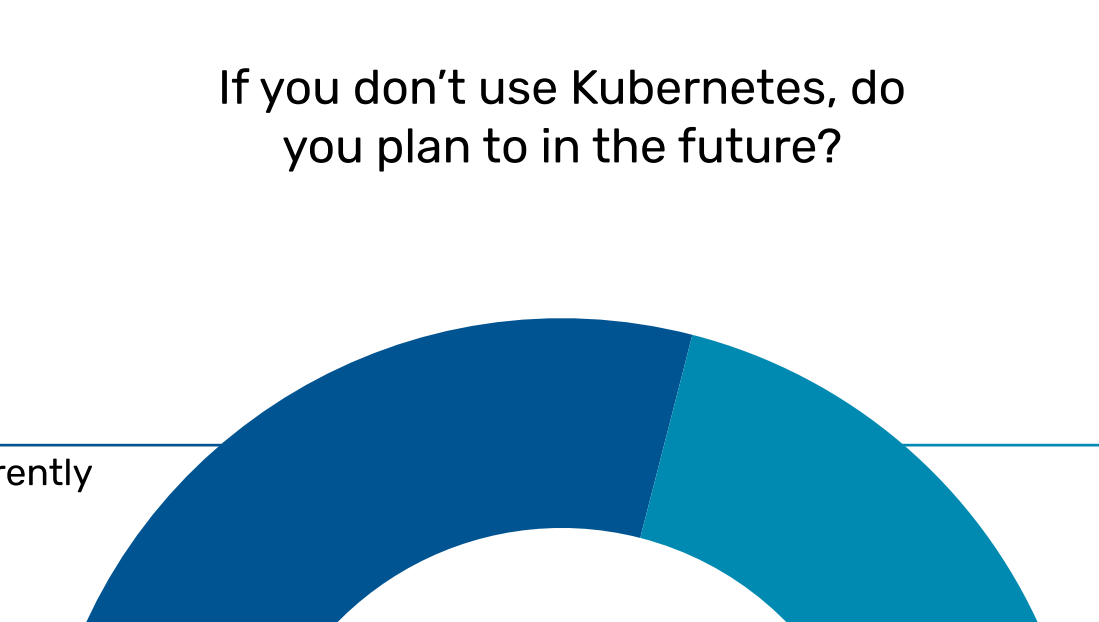
Data collected from May 14-June 6, 2021

Respondents: 100 Technical decision makers

Adoption of Kubernetes is becoming universal

Most survey respondents (76%) stated they use Kubernetes in their organizations, with adoption rates evenly distributed across company sizes. Interestingly enterprise-grade organizations (10,001+ employees) reported the highest adoption at 85%.

Do you currently use Kubernetes in your organization?



Amongst the non-Kubernetes users, half of them (50%) are currently evaluating Kubernetes, and 8% have Kubernetes in their plans.

If you don't use Kubernetes, do you plan to in the future?

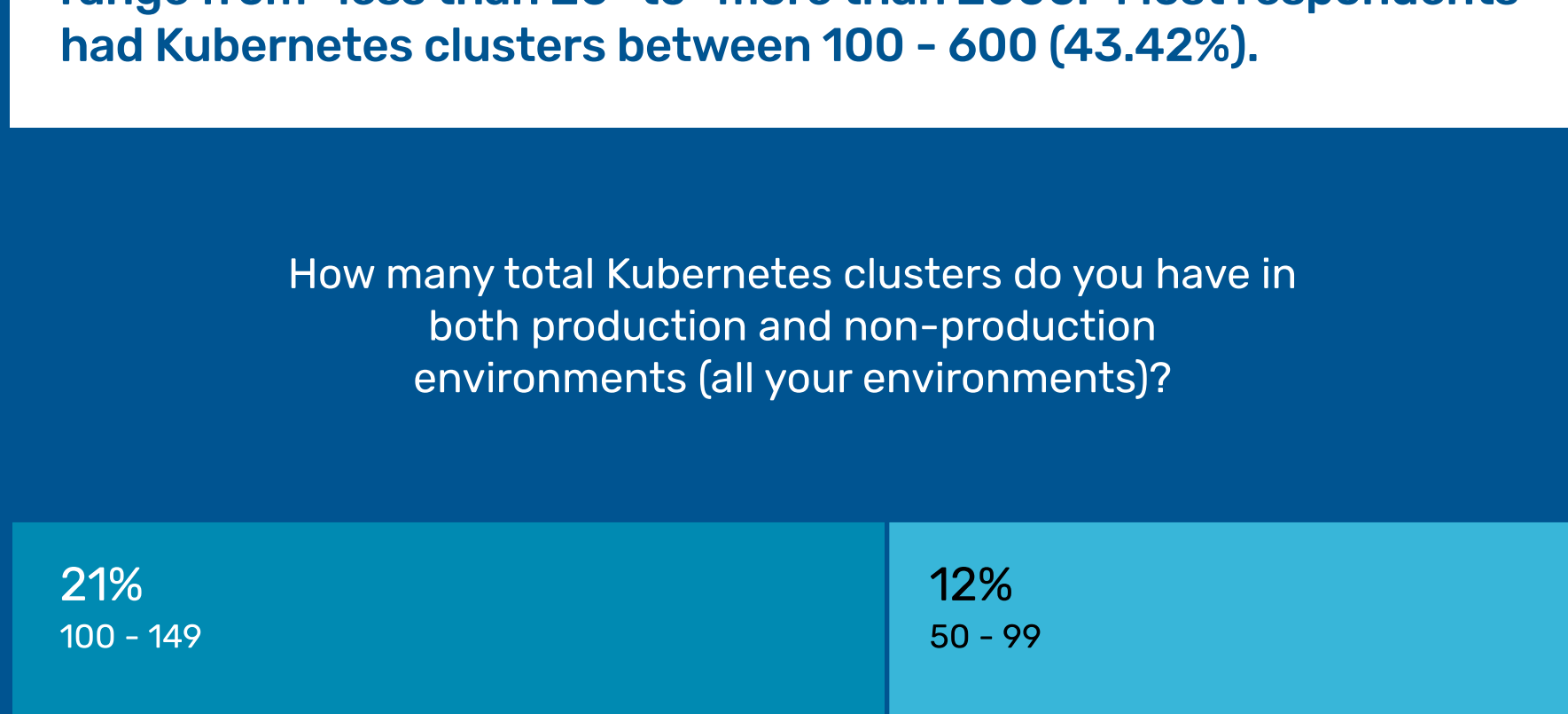


Furthermore, when asked which alternative compute platform they used to deploy applications, Microsoft Azure and AWS were mentioned.

Kubernetes usage spans several functions

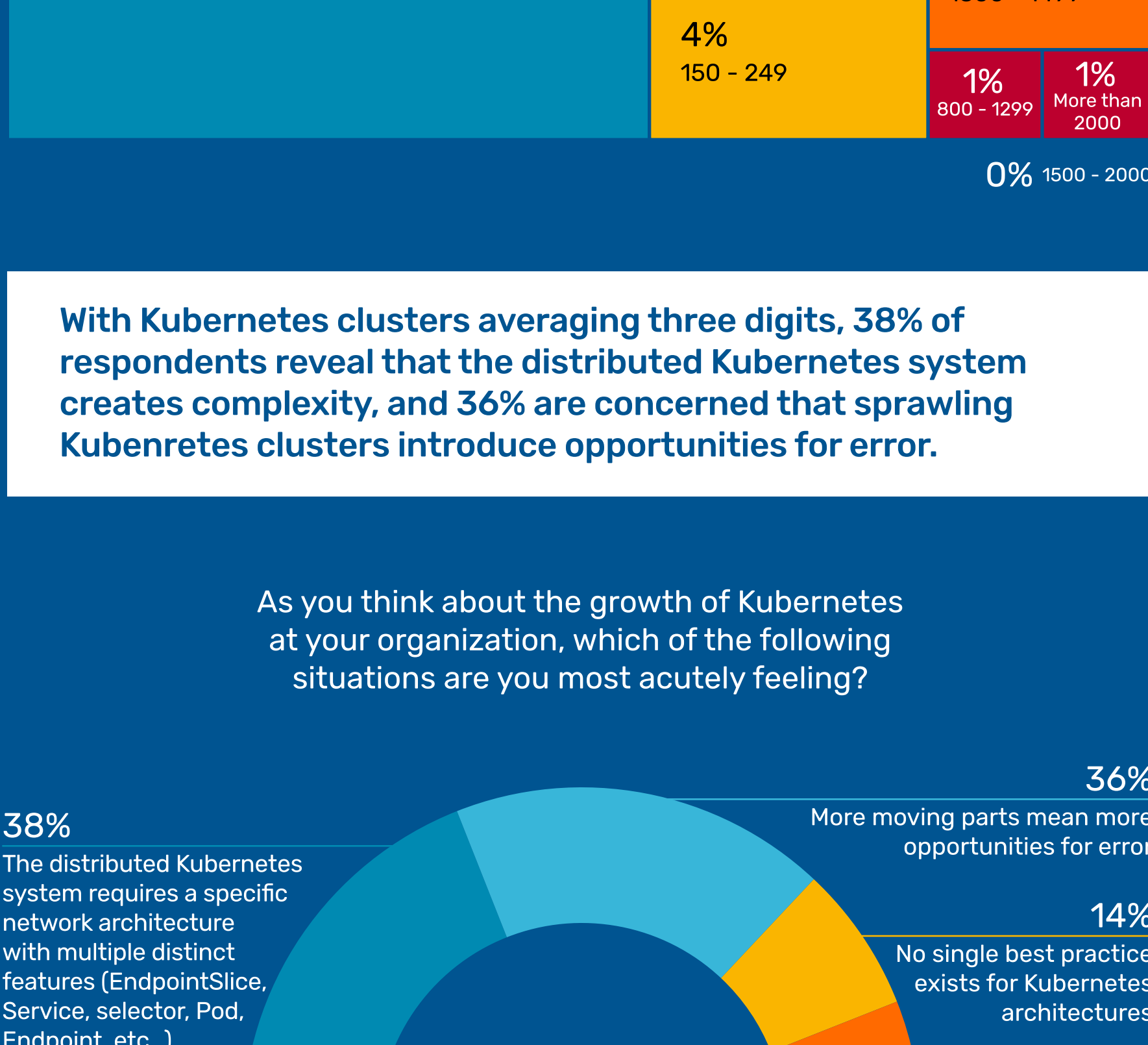
Zeroing in on the current Kubernetes users for the rest of the survey, Pulse learnt that 30% used Kubernetes for software development and testing. The second most common use case for Kubernetes is in production environments (26.32%).

What is your most common use case for Kubernetes?



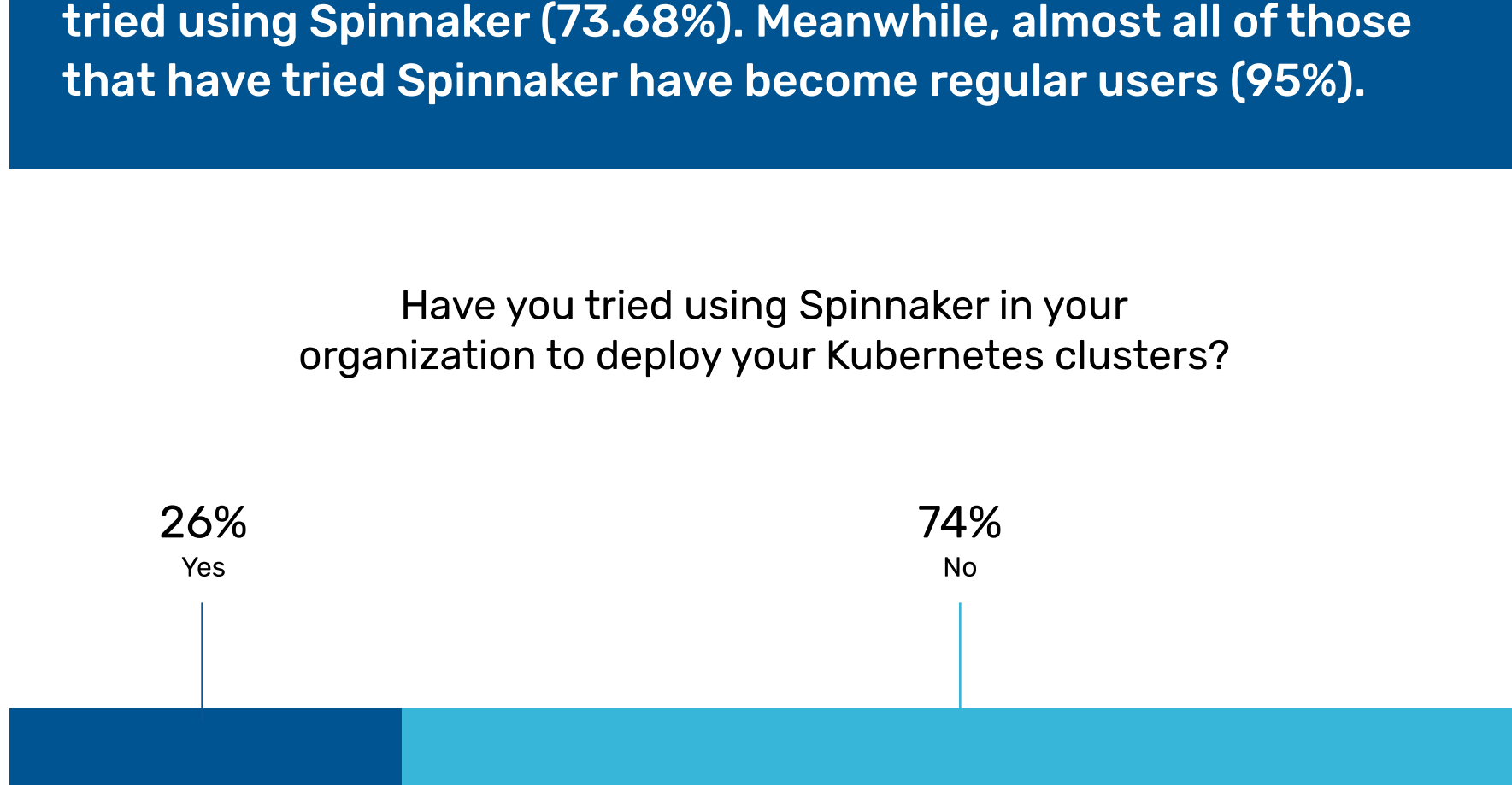
Overall, respondents' Kubernetes clusters varied across a wide range from "less than 20" to "more than 2000." Most respondents had Kubernetes clusters between 100 - 600 (43.42%).

How many total Kubernetes clusters do you have in both production and non-production environments (all your environments)?



With Kubernetes clusters averaging three digits, 38% of respondents reveal that the distributed Kubernetes system creates complexity, and 36% are concerned that sprawling Kubernetes clusters introduce opportunities for error.

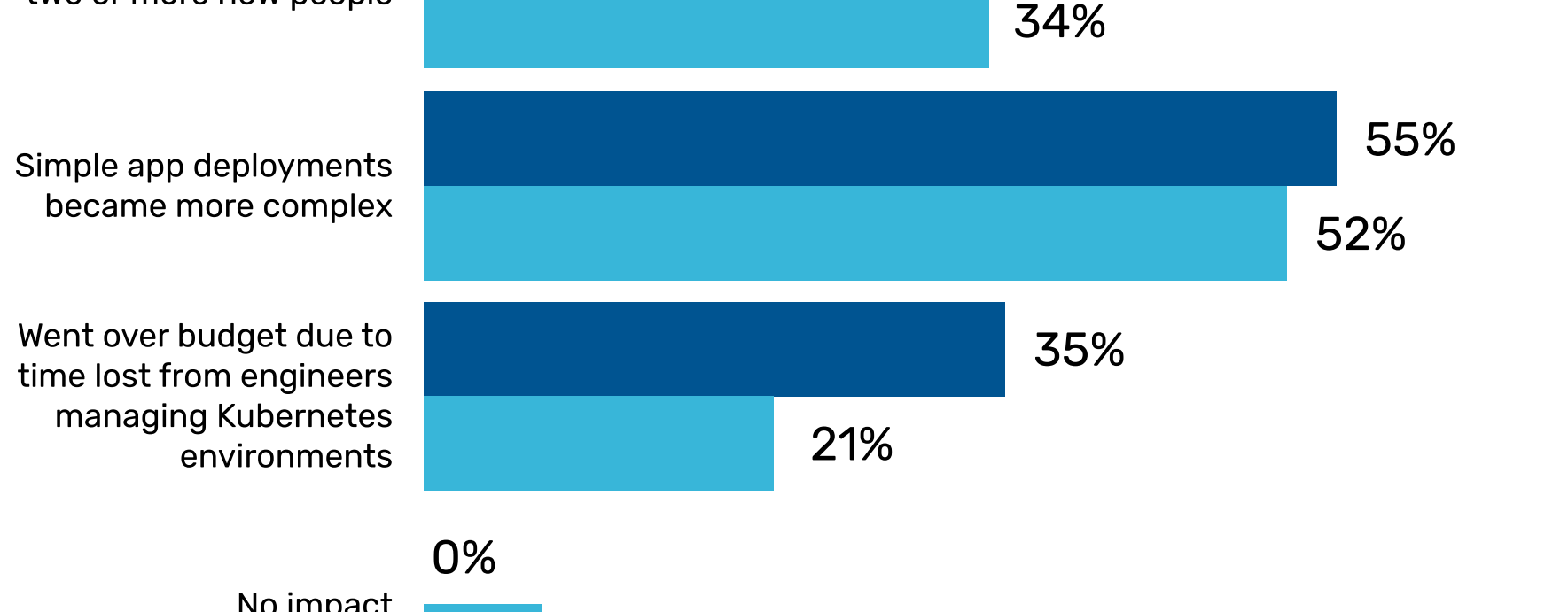
As you think about the growth of Kubernetes at your organization, which of the following situations are you most acutely feeling?



Spinnaker optimizes workflows after initial complexity hurdle

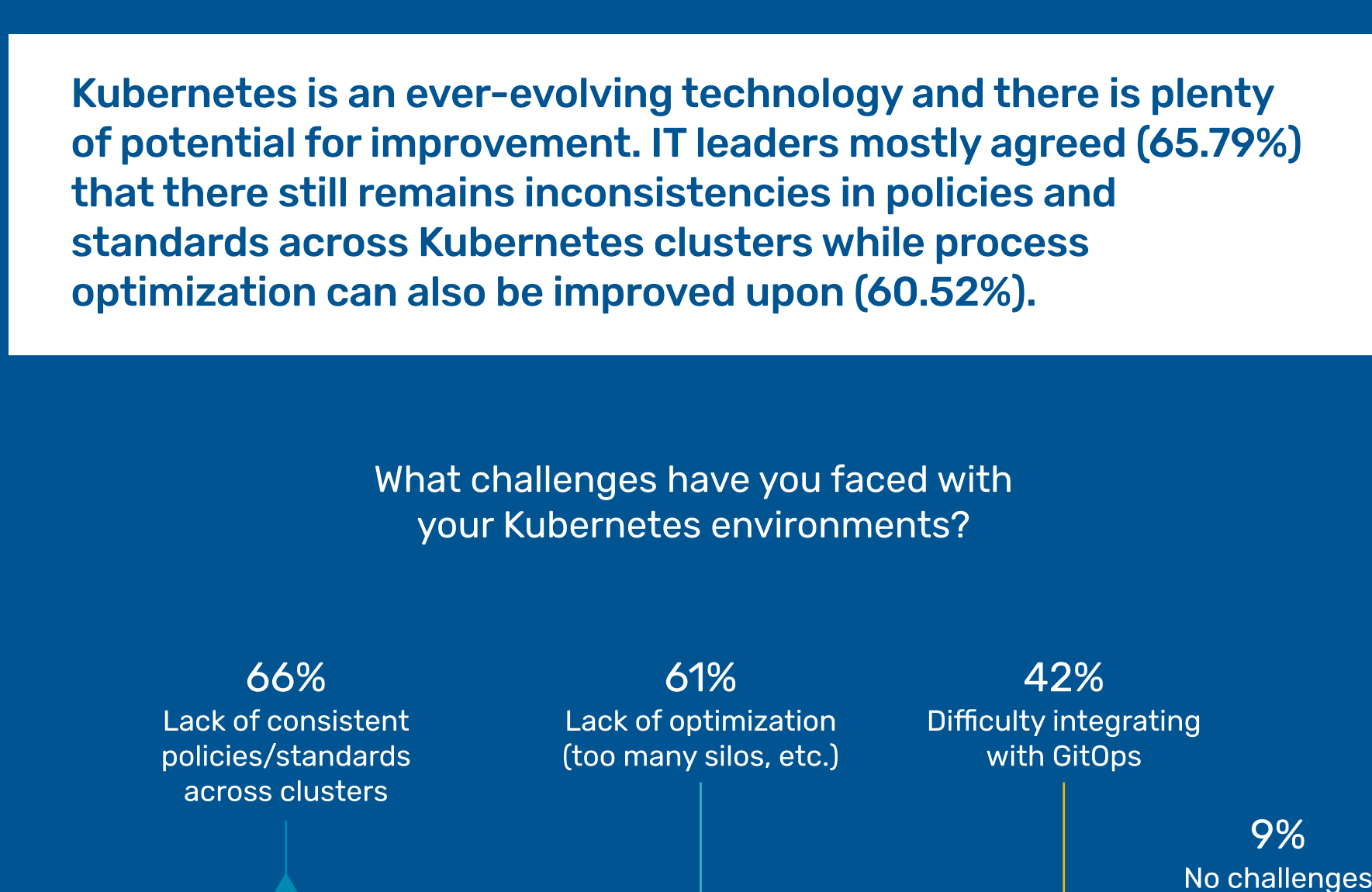
Amongst the current Kubernetes users, a vast majority have also tried using Spinnaker (73.68%). Meanwhile, almost all of those that have tried Spinnaker have become regular users (95%).

Have you tried using Spinnaker in your organization to deploy your Kubernetes clusters?



While the complexities of Kubernetes have mostly affected both Spinnaker and Non-Spinnaker users alike, it appears the added complexity of combining both Spinnaker and Kubernetes has negatively impacted budgets and timelines for 35% of Spinnaker users.

In order to support your Kubernetes environments, what impacts have you felt?



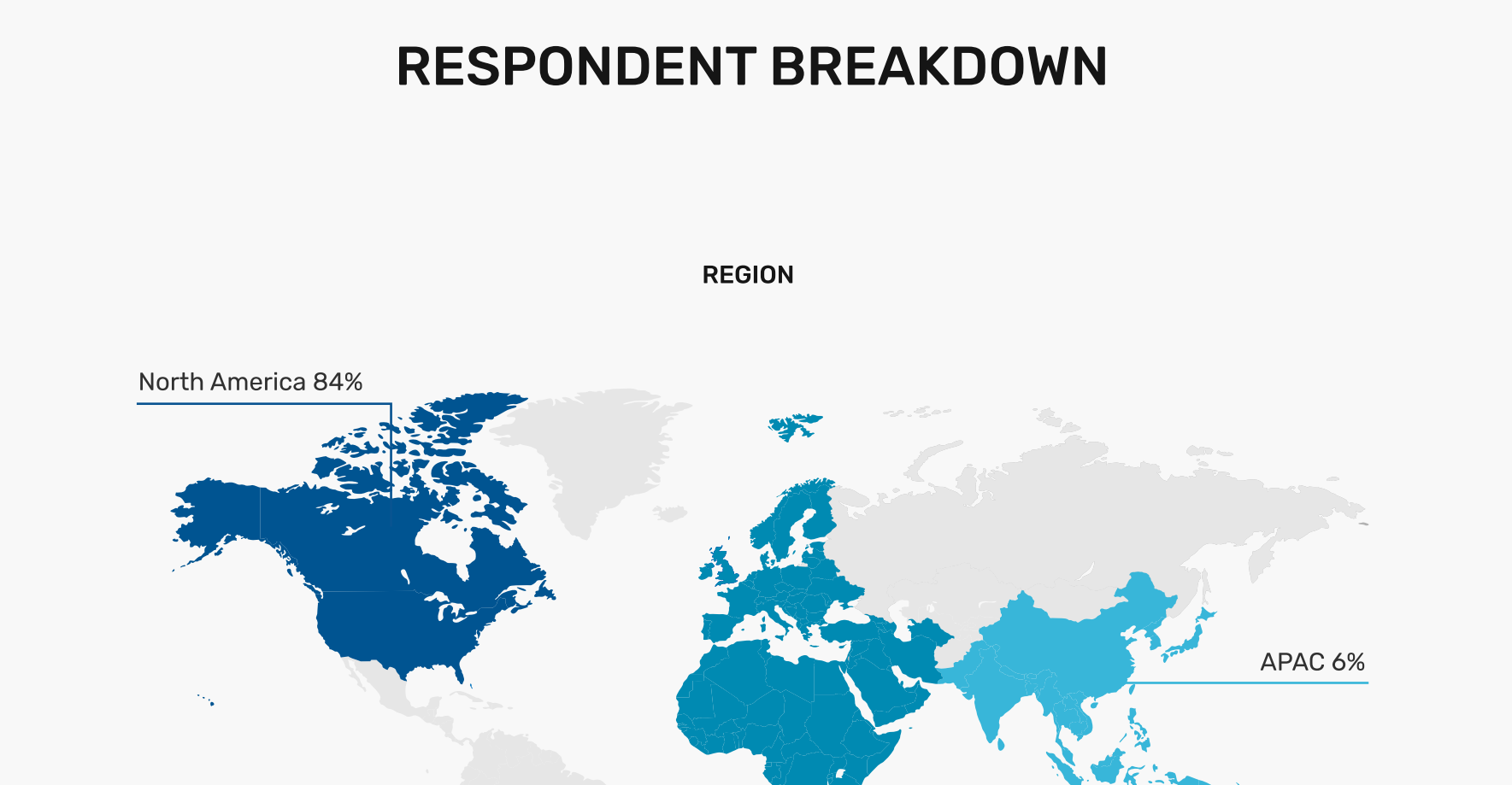
"Using Spinnaker for Kubernetes deployments seemed complex in the development phase but once streamlined, everything works smoothly."

- Director in transportation and warehousing industry

Room to grow with Kubernetes

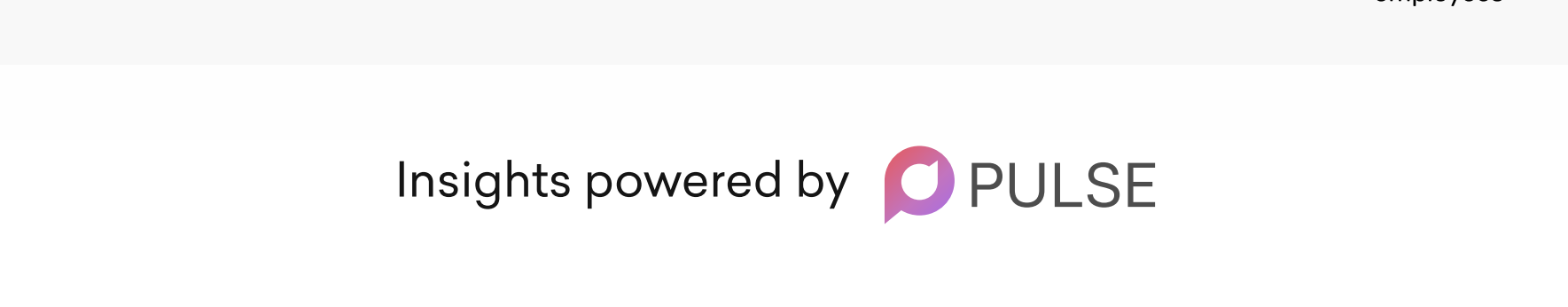
Kubernetes is an ever-evolving technology and there is plenty of potential for improvement. IT leaders mostly agreed (65.79%) that there still remains inconsistencies in policies and standards across Kubernetes clusters while process optimization can also be improved upon (60.52%).

What challenges have you faced with your Kubernetes environments?



Primary responsibility for Kubernetes varies between organizations with 39% of respondents saying InfoSec teams are mostly liable for it, while 30% said Development teams are.

Who is primarily responsible for Kubernetes security at your organization?



RESPONDENT BREAKDOWN

REGION

TITLE

COMPANY SIZE

